



deliver more than expected

www.twitter.com/Telerik

www.facebook.com/Telerik

LESSONS LEARNED: BEING AGILE IN THE WATERFALL SANDBOX

Philip Japikse (@skimedic)

phil.japikse@telerik.com

www.skimedic.com/blog

MVP, MCSD.Net, MCDBA, CSM, CSP
Patterns & Practices Evangelist, Telerik



WHO AM I?

- Agile Practices Evangelist, Telerik, Inc.
- Microsoft MVP, MCSD, MCDBA, CSM, CSP
- Developer().Speaker().Writer()
- Lead Director, Cincinnati .NET User's Group
- Founder, Agile Conferences, Inc. (dayofagile.org)
- Host, Zero To Agile (telerik.com/zerotoagile)
- Columnist, www.developer.com



AGILE MANIFESTO

We are uncovering better ways of developing software by doing it and helping others do it. Through this work we have come to value:

Individuals and interactions over processes and tools

Working software over comprehensive documentation

Customer collaboration over contract negotiation

Responding to change over following a plan

That is, while there is value in the items on the right, we value the items on the left more.

<http://agilemanifesto.org>



CAN'T WE ALL JUST GET ALONG?

- Courtesy and Respect
- Teams must interact with many other groups in the enterprise Don't assume they don't "get it"!
- Be agile in your interactions
- Disclaimer: Some of the concepts in the following slides are not traditional Scrum



ARCHITECTURE & DOCUMENTATION

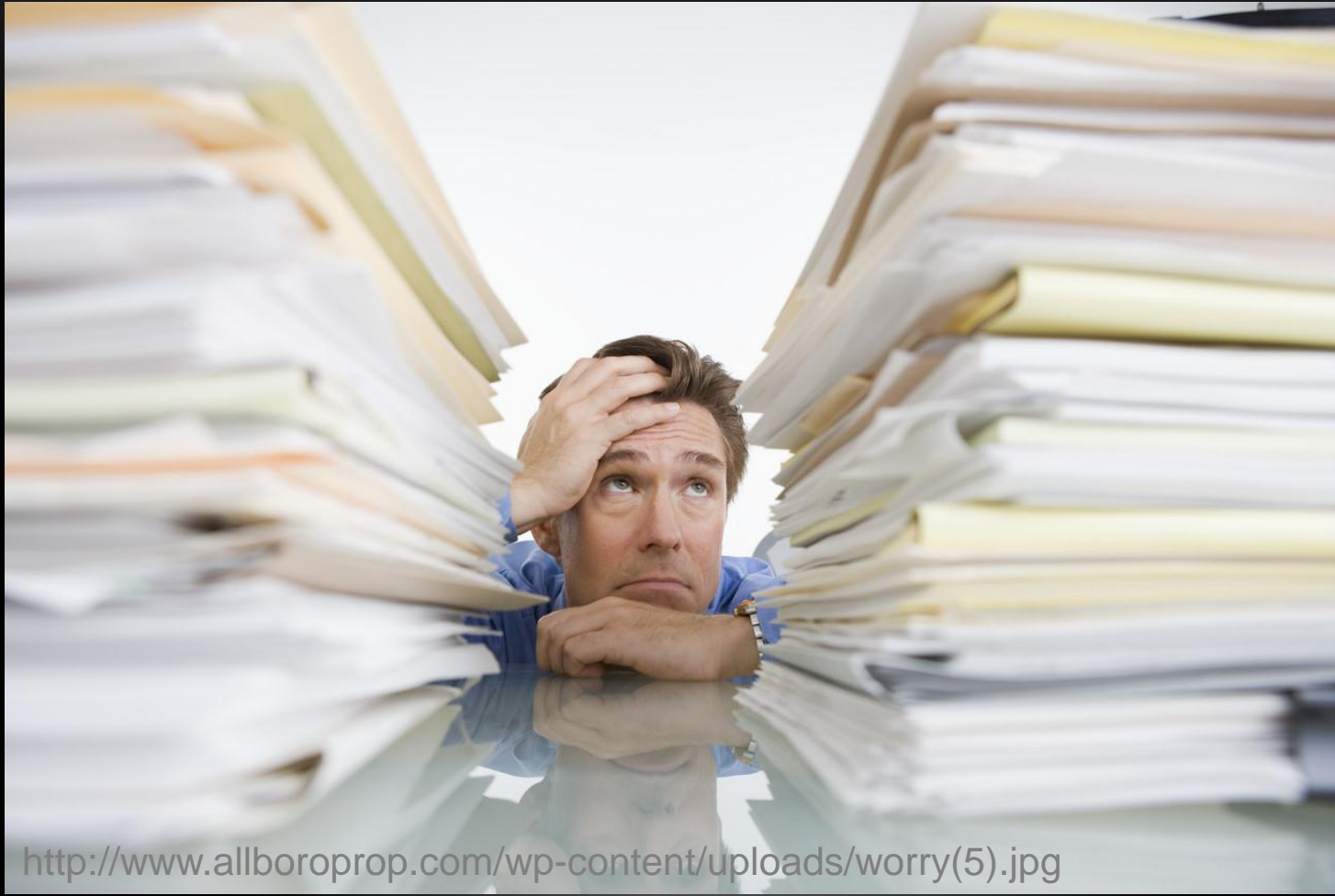
ARCHITECTURE



http://desktopwallpaper-s.com/63-Travels/-/Spain_Architecture_Exhibition/



DOCUMENTATION



[http://www.allboroprop.com/wp-content/uploads/worry\(5\).jpg](http://www.allboroprop.com/wp-content/uploads/worry(5).jpg)



www.telerik.com

Plan. Build. Test.

5/4/2012

7

BUDGETING – FIXED COST, DURATION

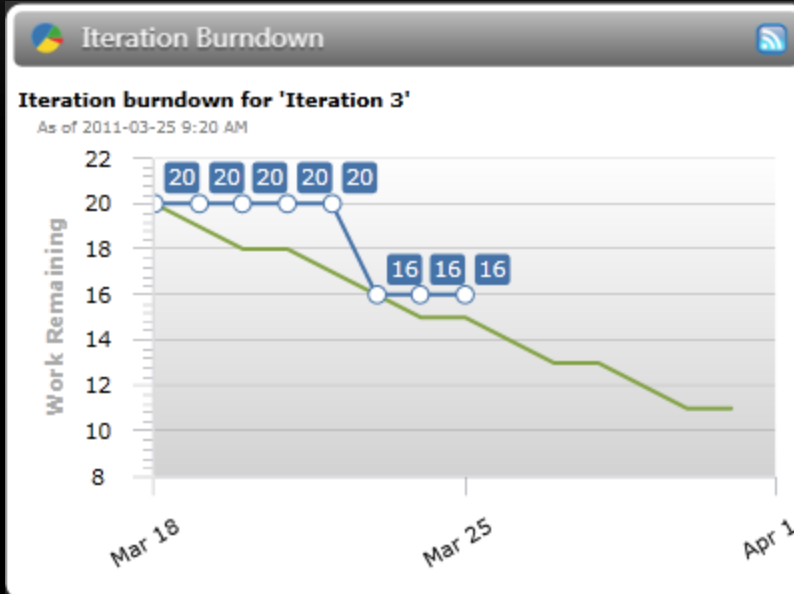


TRANSPARENCY

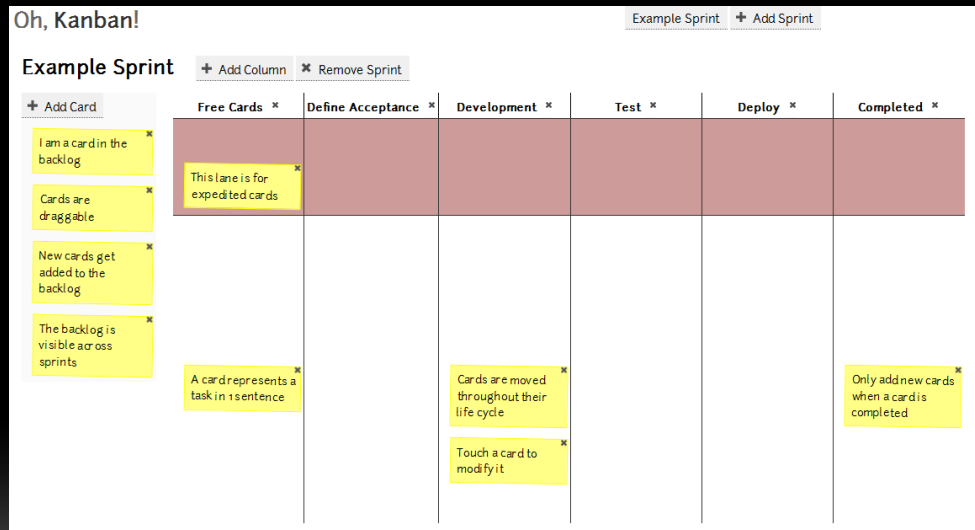
INTER-TEAM COMMUNICATION



PROJECT STATUS



Oh, Kanban!



SPRINT REVIEW



<http://yeseverestcs.com/secure/images/Presentations8.jpg>



www.telerik.com

Plan. Build. Test.

REQUIREMENTS

PRODUCT BACKLOG



http://x15.xtremeprototypes.com/common/images/packages/x-15A-2_package/X-15A-2_panel_1_lg.jpg



www.telerik.com

Plan. Build. Test.

5/4/2012

14

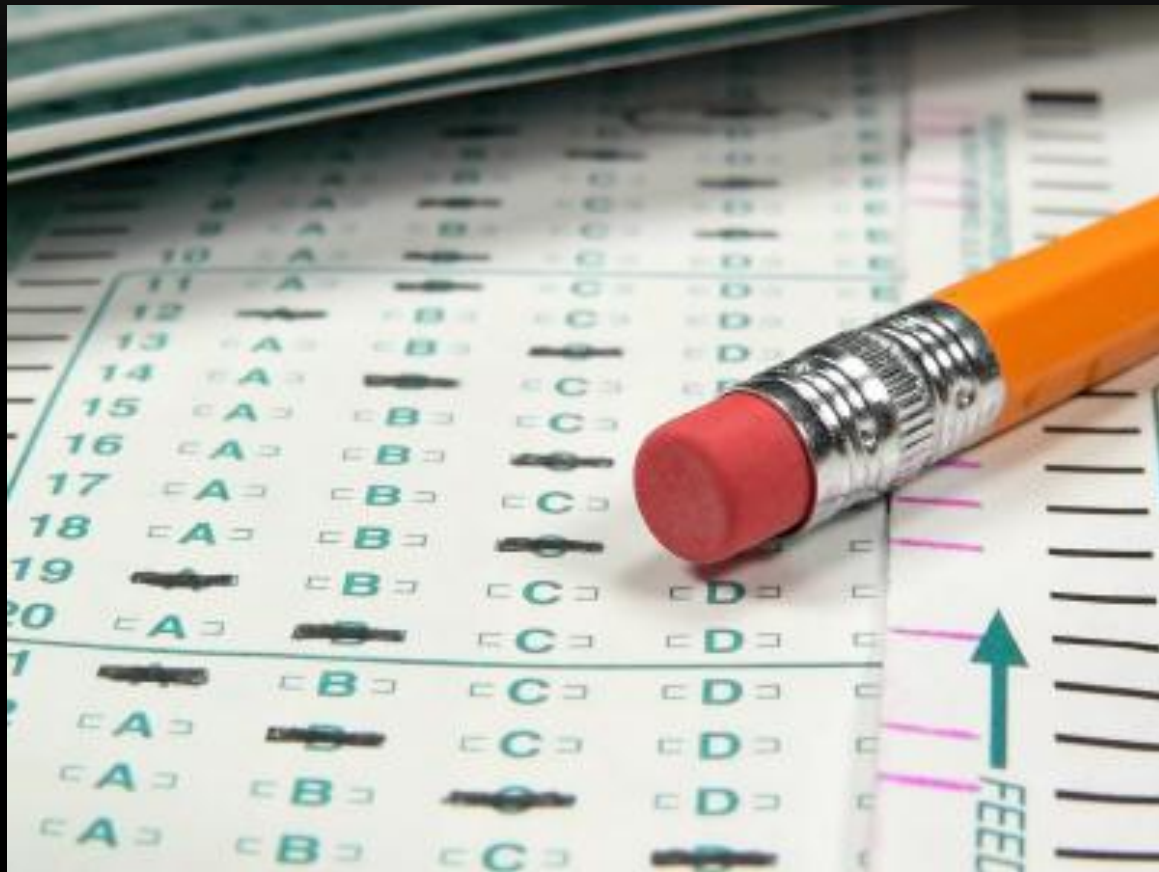
SPRINT BACKLOG ITEMS



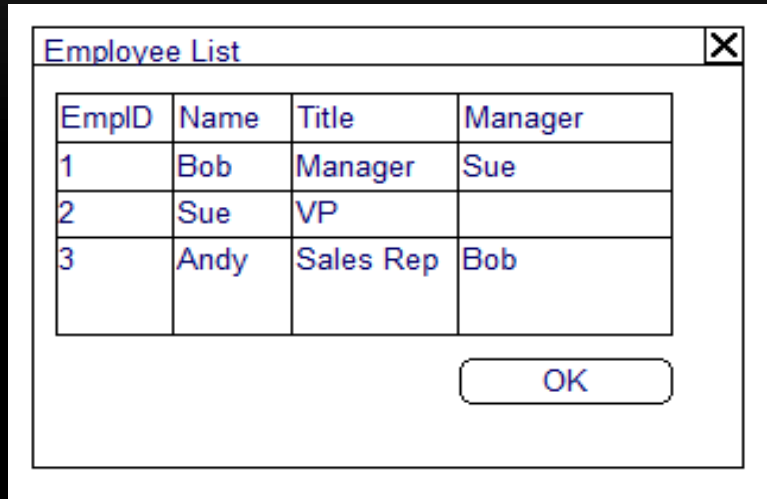
<http://www.kellyskindergarten.com/Calendar/images/pieces.JPG>



REFINING REQUIREMENTS



WIREFRAMES



<http://www.mockupscreens.com>

<http://www.balsamiq.com>

<http://tinyurl.com/mssketchflow>



DESIGNERS



USER STORIES

- User Stories
 - As an [X] I Want [Y] So That [Z]¹
 - X is a role
 - Y is a feature
 - Z is the benefit

¹<http://dannorth.net/introducing-bdd>

- As an Account Manager, I want to be able to Edit a Customer's Address so that we can Effectively Communicate with them
- Includes success criteria



SUCCESS CRITERIA

- Must be testable
- Use Given/When/Then syntax
 - Given 2000 customers
 - When selecting one
 - Then the form should open in < 1 second



CONTEXT SPECIFICATION¹

- When Editing a Customers Address
 - It Should Load in < 1 sec with 2000 customer records
 - It Should allow an Account Manager to edit the address

¹[Behavior Driven Development \(Code Magazine\) - Scott Bellware](#)



PLANNING

PRODUCT RELEASE PLANNING



<http://englishemporium.files.wordpress.com/2010/10/treasure-map-iclip.jpg>



www.telerik.com

Plan. Build. Test.

SPRINT PLANNING



<http://blog.chron.com/ultimateastros/files/2012/01/full-glass-of-water.jpg>



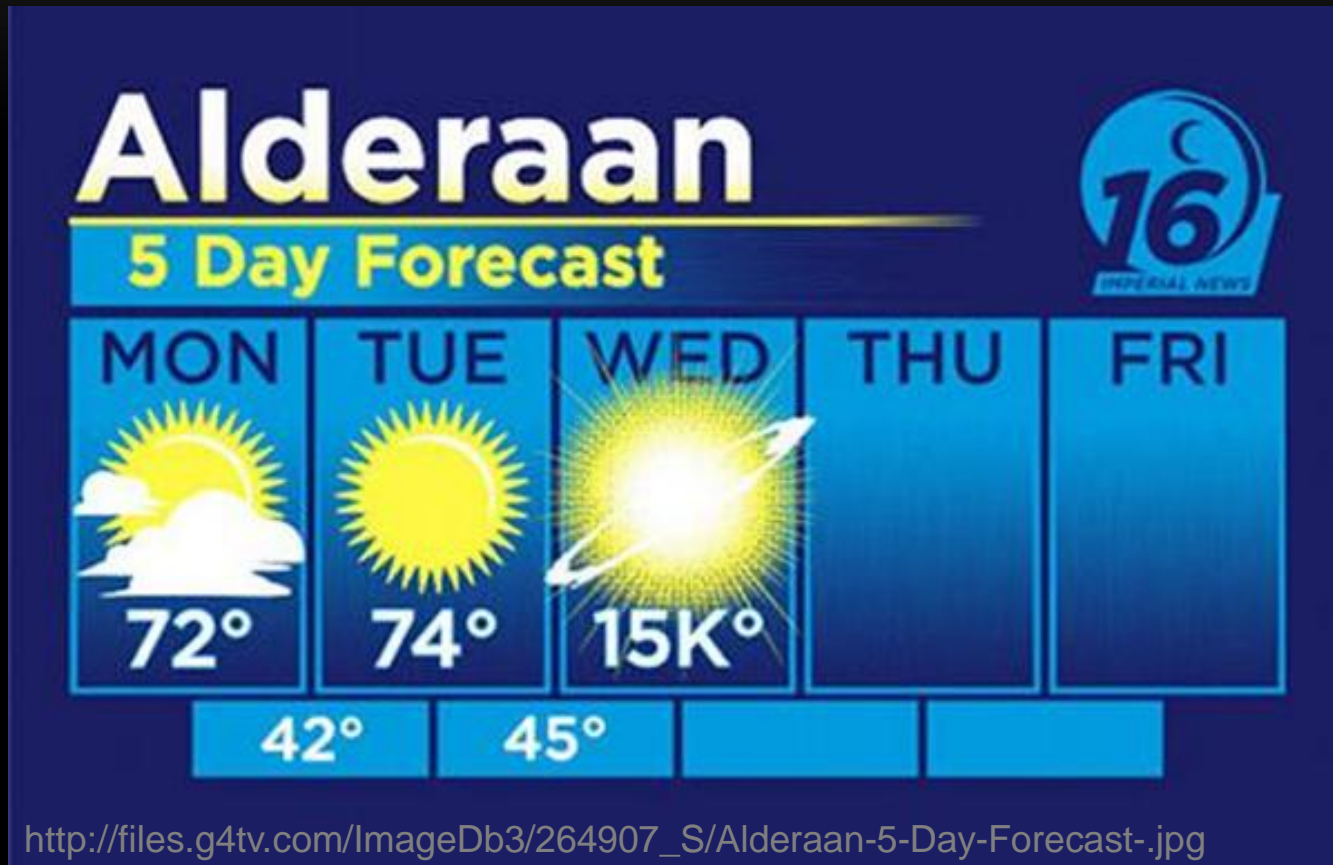
www.telerik.com

Plan. Build. Test.

5/4/2012

24

SPRINT



QUALITY

DEFINING DONE



USER ACCEPTANCE TESTING



<http://bluescale.com.au/wp/wp-content/uploads/2011/09/user-acceptance-tester.jpg>



QUALITY ENGINEERS



<http://www.qastory.com/wp-content/uploads/2012/03/qa-early-test.jpg>



BUG TRIAGE

NY 565989 NY 565989

EVACU-AID™ TRIAGE TAG **CONTAMINATION:** NO YES

Respirators Yes No
 Perfector +2 SEC -2 SEC
 Mental Status Can do Can't do
 Walk ORIENTED DISORIENTED UNCONSCIOUS

Time Pulse B/P Respiration

Time Drug Solution Doseage

Major Injuries: _____
 Destination: _____

Notes: _____

Allergies: _____
 Prescriptive Medication: _____

Personal Information
 Name: _____
 Address: _____
 City: _____ St: _____ Zip: _____ Phone: _____
 Male _____ Female _____ Age: _____ Weight: _____

| | |
|------------------|------------------|
| DECEASED | DECEASED |
| IMMEDIATE | IMMEDIATE |
| DELAYED | DELAYED |
| MINOR | MINOR |

<http://maxcdn.nexternal.com/medtech/images/triagetagNEW.jpg>



TDD/BDD



<http://icanhascheezburger.com/2008/10/22/funny-pictures-safety-blanket-ai-has-one/>



PAIR PROGRAMMING



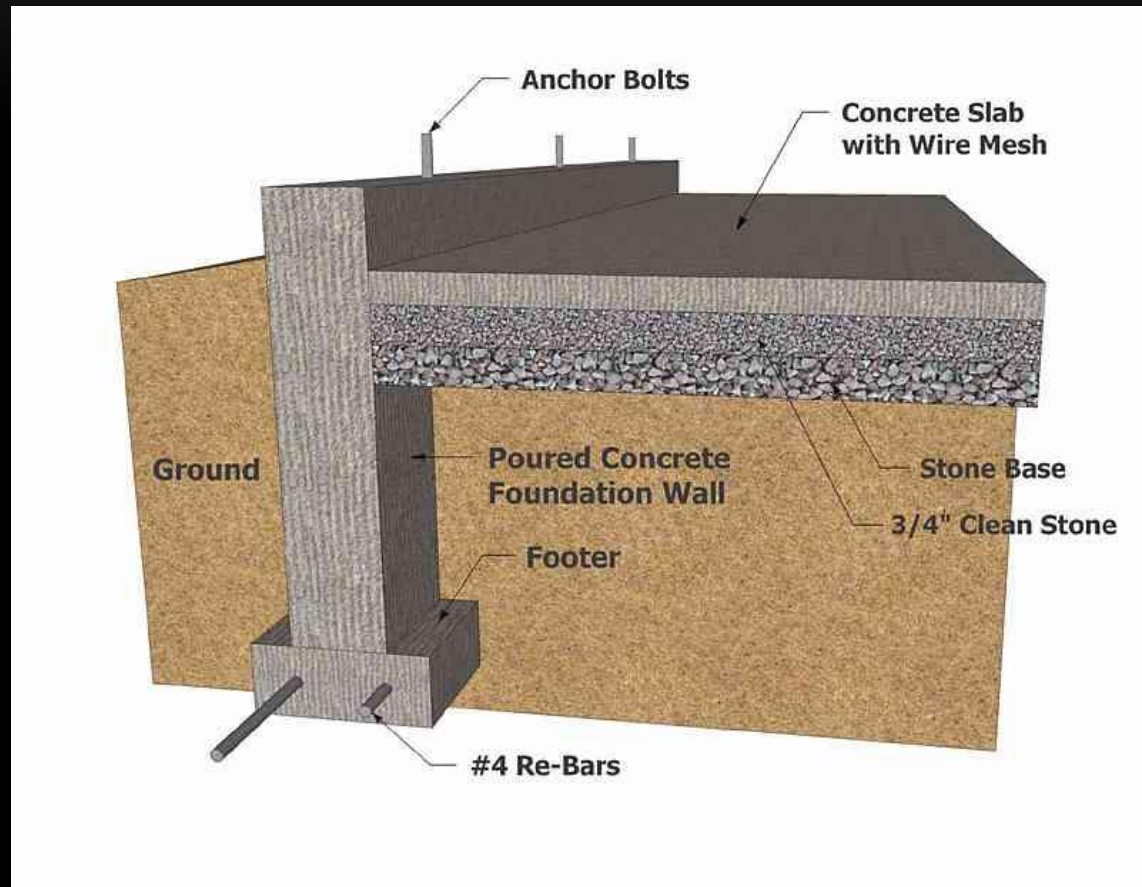
WHEN YOU DON'T PAIR

It makes pandas sad



WARM UP, COOL DOWN

SPRINT ZERO



VERIFICATION/HARDENING SPRINT



http://www.hurdygurdy.com/progress/images/290702_11.jpg



www.telerik.com

Plan. Build. Test.

5/4/2012

35

~~CLASSIC~~ MODIFIED SCRUM LIFECYCLE

03: Release_Planing

07: Sprint_Zero

10: Sprint_Planing_Meeting

20: GOSUB 70

30: Sprint_Review

40: Sprint_Retrospective

50: IF Program_Complete THEN GOTO **115**

60: GOTO 10

70: REM Sprint

80: Daily_Standup

85: Daily_Bug_Triage

90: Do_Work

100: IF Sprint_Complete RETURN

110: GOTO 70

115: Verification_Sprint

120: RELEASE

130: END



SURVIVE THE WATERFALL



CONTACT ME

- phil@telerik.com
- www.skimedic.com/blog
- www.twitter.com/skimedic
- www.telerik.com/zerotoagile

